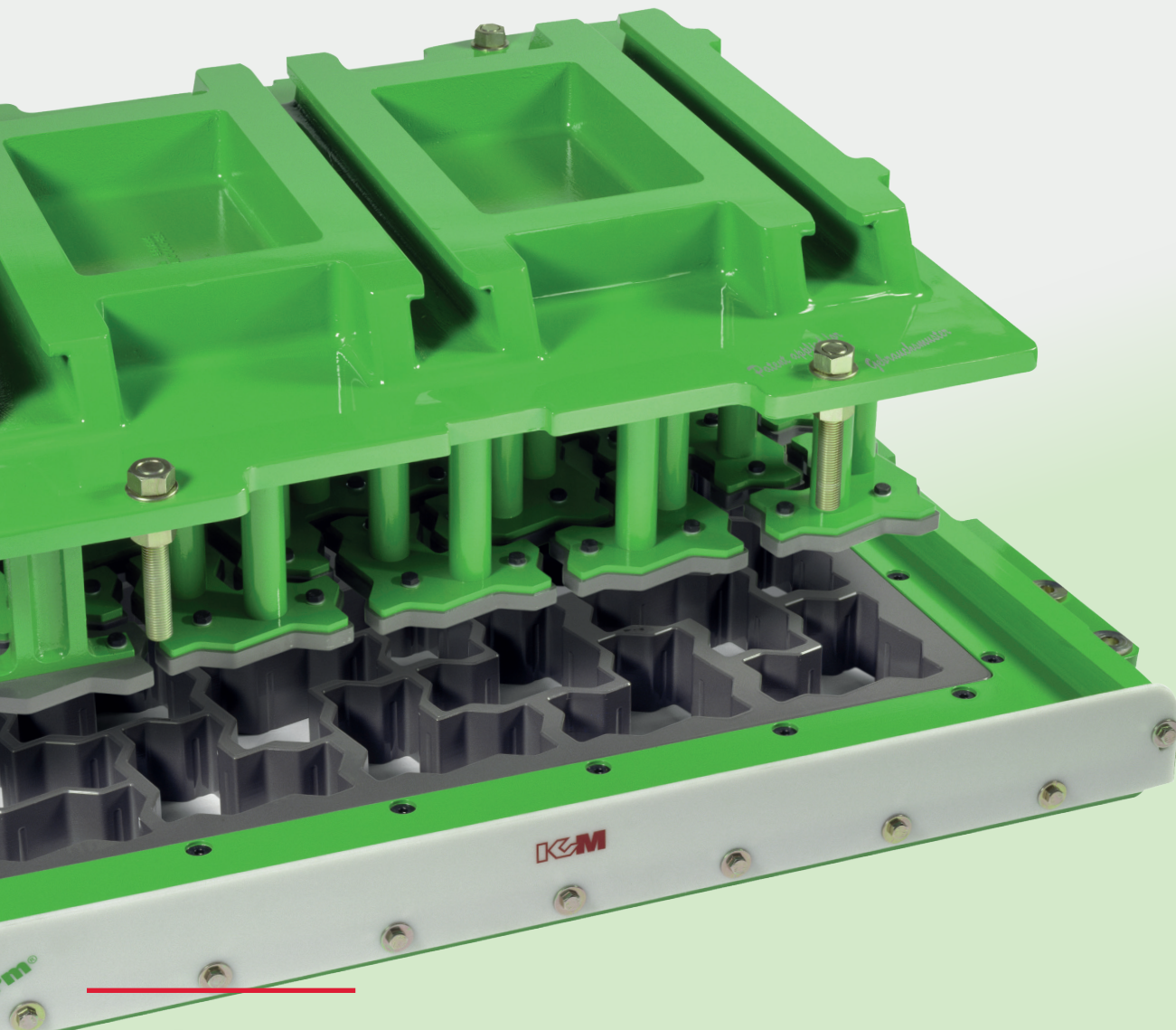


Moulds for Pavers

DE
EN
DA



**Reliable.
Flexible.
Available.**





➤ Moulds for Pavers

KVM develops and manufactures flexible and long-lasting moulds for paving stones and slabs. Our solutions are based on more than 60 years of experience within the industry, which makes us a world-leading mould supplier.

We develop unique and trustworthy equipment for mould production, which is tailored to your production needs and help you reach the best possible output.

The moulds are characterized by a long service life, which gives the least possible climate footprint as well as a reduction in production costs. In addition, our moulds are compatible with all known machine types for the production of paving stones and slabs.

With KVM's moulds, you are secured a flexible, efficient and reliable production.

➤ The structure of the mould

A KVM mould has a modular construction, which means that it can be assembled specifically for your production needs and provide you with a flexible mould that matches your machine type. This results in less wear on the

block stone machine, extends the life of the mould and gives the best possible production result. As the mould is also weld-free, wear parts such as stamp plates and inserts can therefore be quickly replaced with new parts.

TAMPER HEADS

Fully cast tamper head plate in vibration-resistant steel.

FRAME

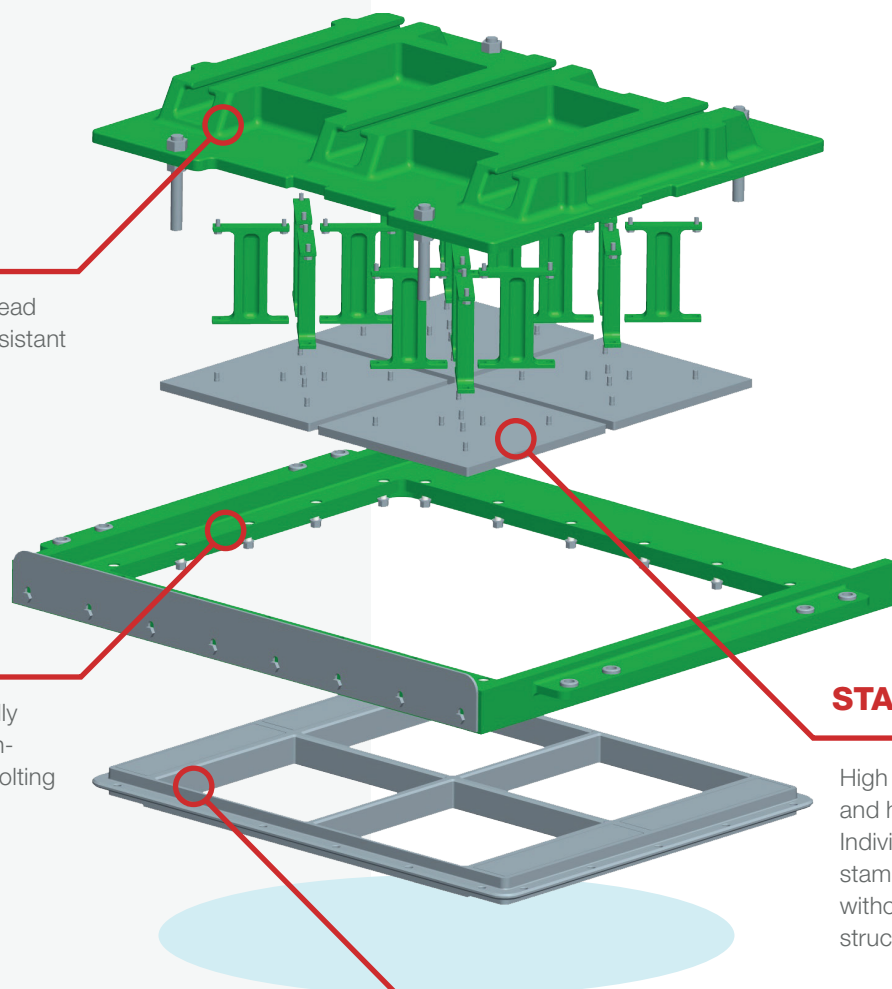
Fully cast in specially developed vibration-resistant steel for bolting of mould inserts.

STAMP PLATES

High alloy certified and hardened steel. Individually designed stamp plates - with or without chamfer and structure.

INSERT

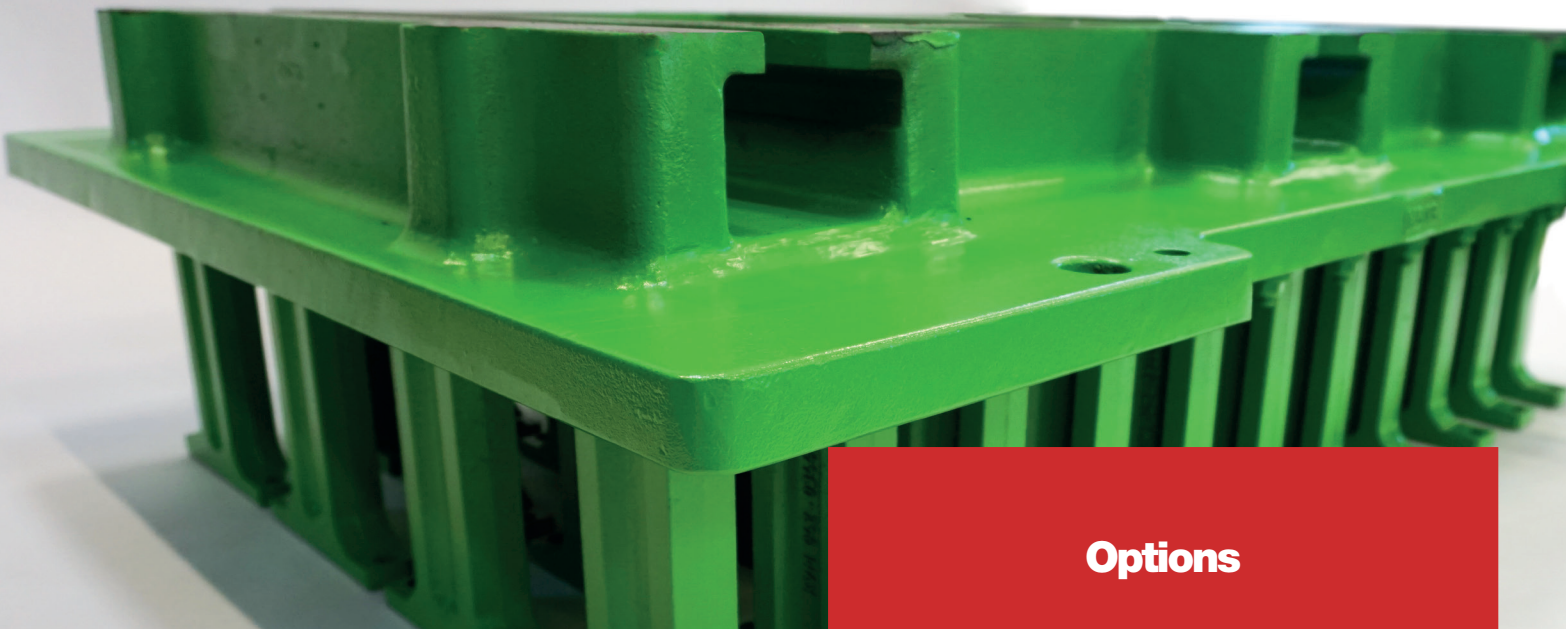
High-alloy certified and hardened steel - bolted into the frame.



➤ With KVM as a partner, you benefit from the following:

- 1,000,000-cycle warranty on moulded parts
- Interchangeable wear parts that give you a cost-effective production
- Quick replacement of inserts and stamp plates
- The mould is hardy, reliable and flexible
- Manufactured in accordance with our ISO 9001: 2015 quality management system
- Short delivery time on both complete moulds and mould parts
- Compatible with all known machine types for the production of paving stones and slabs





➤ Tamper Head

A KVM tamper head is individually adapted to the individual machine type for stones and slabs and is the only form on the market with a fully cast tamper head.

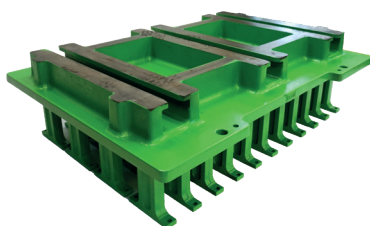
A cast tamper head can withstand the powerful vibrations of the machine. In addition, the mould is equipped with FlexLeg® tamper head legs, that are fully cast, bolted legs in standard design, which can be replaced individually at short production stops.

KVM's tamper heads are modular and weld-free and can be mounted with the transport bracket FormStop®. For all types, of course, our guarantee of 1,000,000 cycles on tamper head and legs apply.

Options

- Modular components for dampers
- Adjustable heights for large tile production, which prevents the slabs from being concaved
- Stamp blocker, which ensures that concrete residues do not stick to the top of the stamp plates
- FormStop® is a flexible tamper head stop with built-in damper, which ensures that the stamp plates are not pressed through the mould

SuperTop®



Fully cast in vibration-resistant steel. Extremely durable and at the same time easily interchangeable in the block machine.

FlexTop®



Flexible and adjustable tamper head, which can be adapted to most machine types. Made of standardized and replaceable parts.

FlatTop®



KVM's basic tamper head, which can be adapted to most machine types. It is a massive and at the same time very stable tamper head.

► Frames

One of the many advantages of KVM's moulds is the durability of the cast mould frames, which have been tested for 25 years. The frames can be mounted with replaceable wear plates. KVM's cast frame is designed and developed to follow the machine's vibrating table. The wear plates are made of hardened steel and bolted into the frame, which ensures a quick replacement.

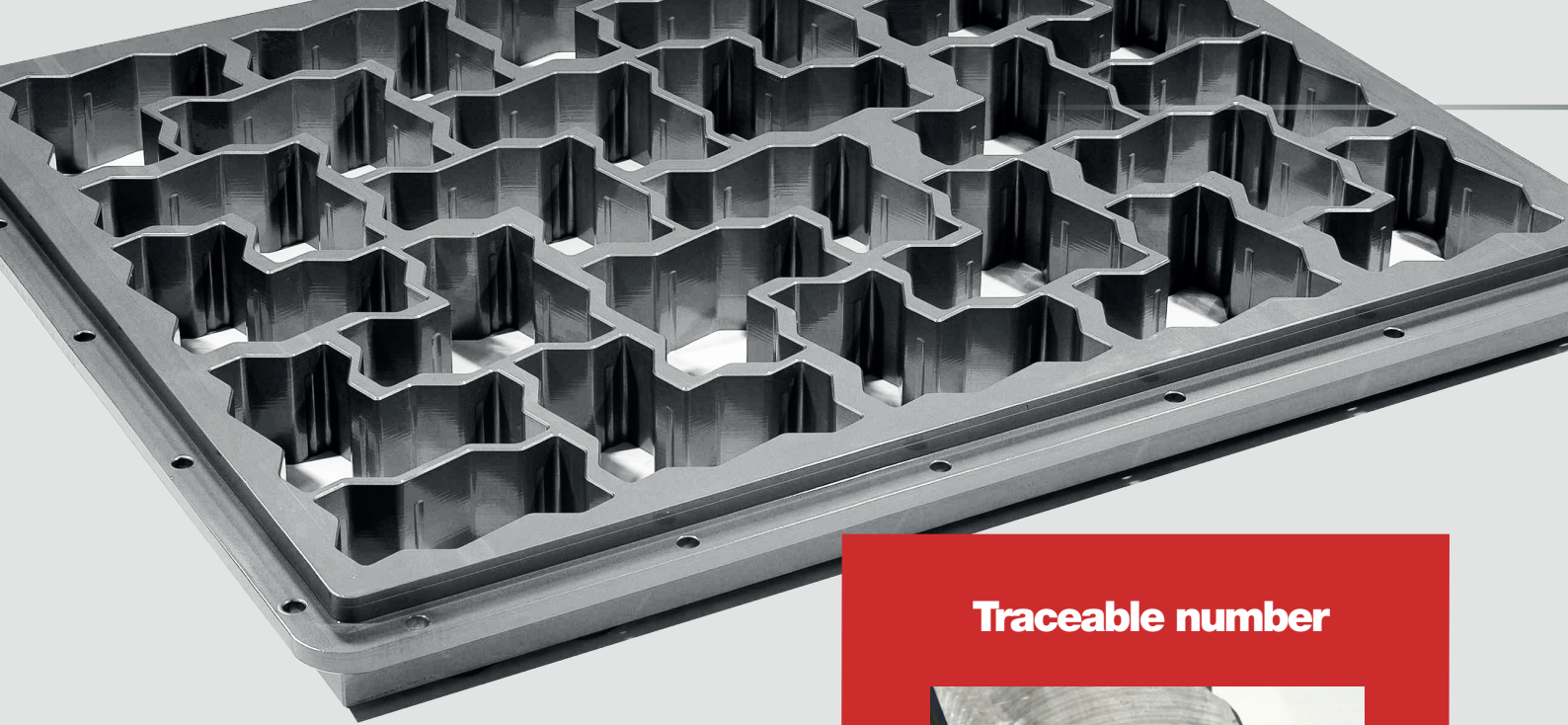
The frame is fully cast in vibration-resistant steel for bolting of inserts.

Options

- Interchangeable wear plates
- Bolted support plates for casting plate
- Adjustable mould height
- Bushings for quick mould change

- Fixed quick change of insert
- Moulded frames in vibration-resistant steel
- Weld-free
- Flexible mould frames that follow the vibrating table
- 1.000.000 cycles guarantee on the frame
- Possibility of mounting wear plates, which prolongs the life of the frame
- Construction strength tailored to specific machine types
- Adapted for different types of inserts with or without wear plates





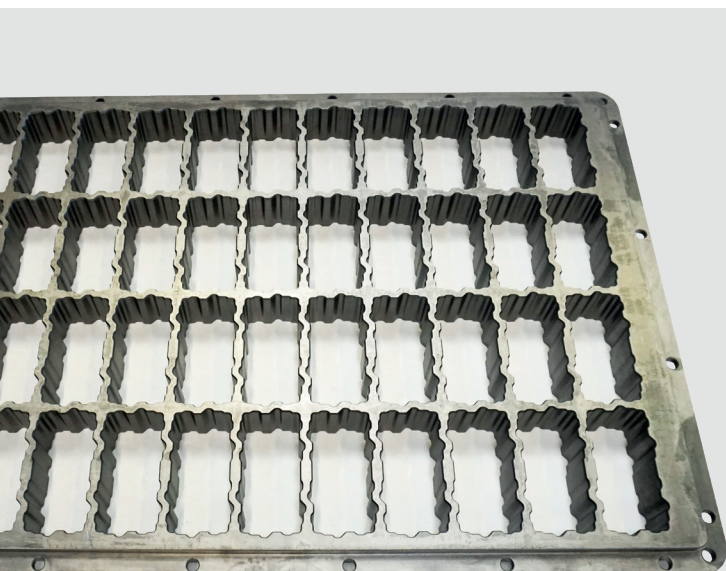
➤ Inserts

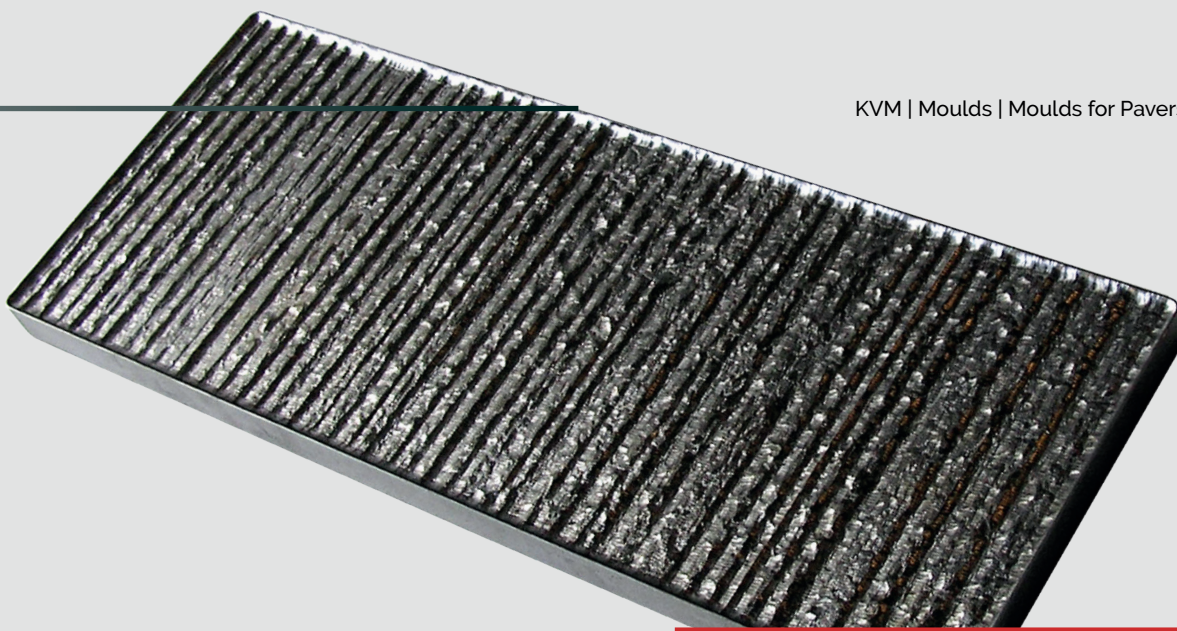
KVM's inserts are made of hardened, certified steel, which is bolted into the frame. The hardening process increases the surface hardness and abrasion resistance of the metal, whereas the core is tough and flexible. The combination of these properties helps to strengthen the durability and breaking strength of the insert. In addition, KVM's FixWrap system ensures a fast and correct installation of inserts and stamp plates.

Traceable number



Each insert has its own unique and traceable number. In addition, a sample piece from the insert is always kept at KVM.





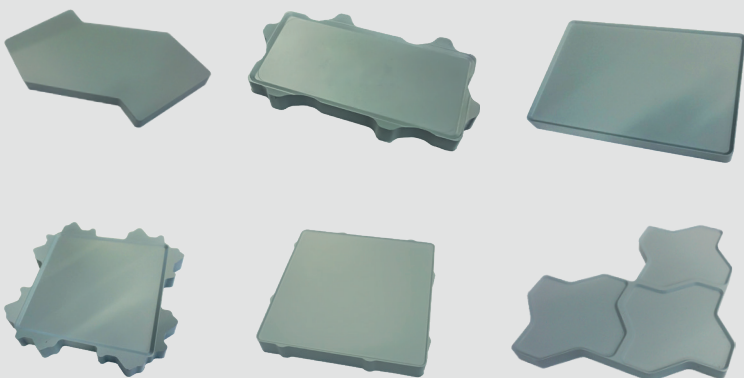
➤ Stamp plates

A KVM stamp plate is made of high-alloy, certified and hardened steel. It will always be sharp-edged and individually designed for your specific needs. The stamp plates have a profiled surface and are manufactured in the very highest quality. If a special structure, a specific surface pattern or logo is desired, we can produce a model using 3D scans.

Options

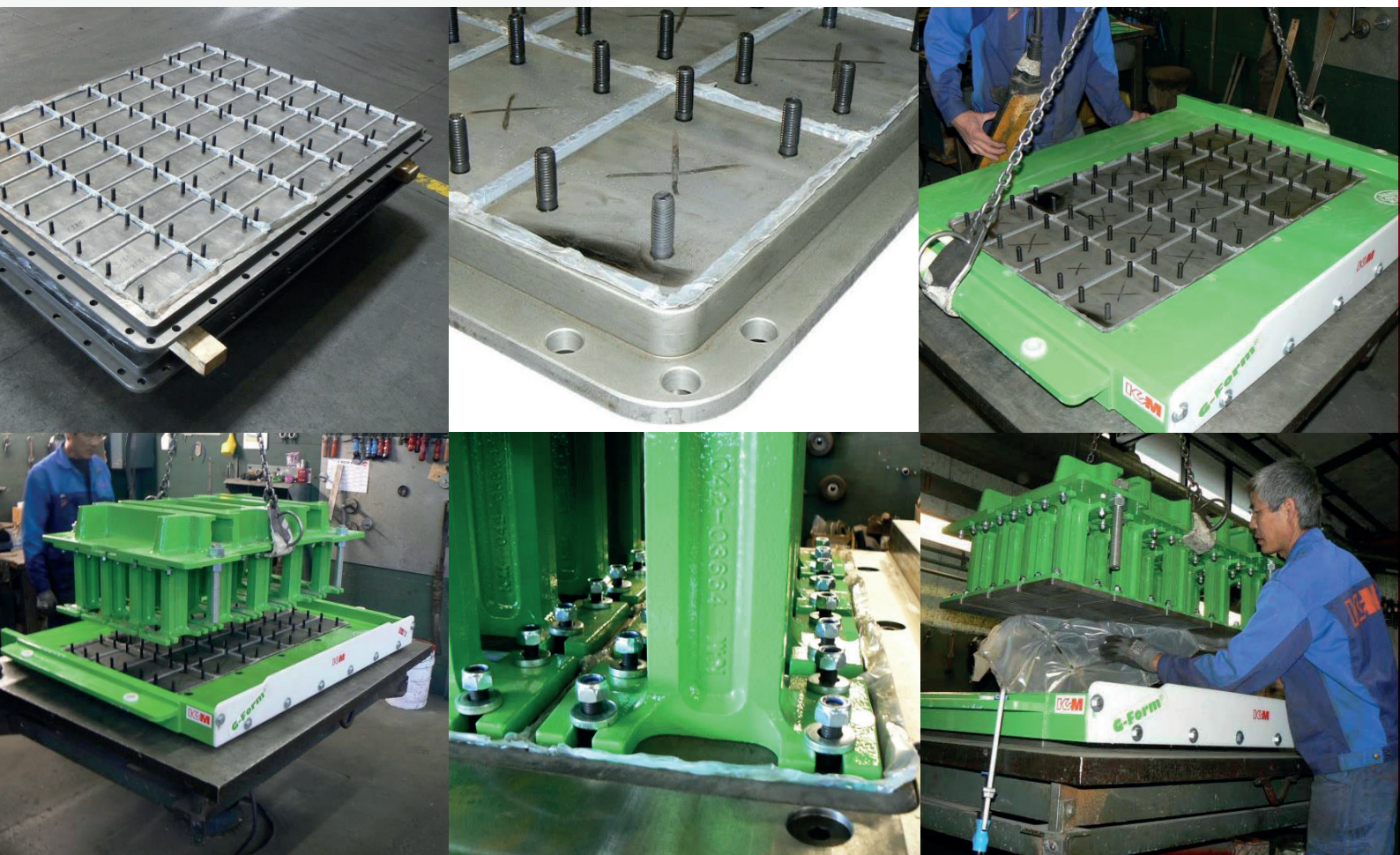
- Stamp plates with adjustable heating
- Stamp coating
- Movable pneumatic parts
- Surface structure of your choice (3D scanning)

Examples of stamp plates



➤ FixWrap®

To guarantee a quick and safe replacement of inserts and stamp plates, KVM has developed FixWrap®, which protects the stamp plates during replacement. FixWrap® ensures that tamper head with new stamp plates can be lowered precisely into the mould, and thus the mould is ready for production without the risk of damage to the mould parts.



➤ KVM Service

At KVM there is a strong link between, quality, delivery security and a high level of service. Customers are at the heart of what we do, both in terms of product development, fast delivery of new mould equipment, renovation of existing moulds and solving production challenges.

If you need assistance in developing a new product, our technical department will be at

your disposal and look at what options you have. Over the years, we have helped many of our customers in Denmark and abroad, with the development and manufacture of new products.

Our many years of know-how means that we can help customers optimize their production, and thereby achieve the best possible production output.

24/7/365 online service

Tel. +45 87 702 702

**Reliable.
Flexible.
Available.**



➤ kvm.com
➤ tel. +45 87 702 700

KVM A/S . Industrivej 22-24 . DK-8620 Kjellerup
Tel. +45 87 702 700 . kvm@kvm.dk . kvm.com